



St Cuthbert Mayne
Catholic Junior School

Curriculum Evening

2024-25

Welcome. It's wonderful to see so many parents. Thank you for being here. Before we start, if there is an emergency, please leave through the nearest exit. The meeting point is on the lower playground. If you need the toilet at any point, there is a visitors toilet at the top of the stairs on the right. Slides from class teacher presentations will be shared on Google Classrooms by the end of the week.

I took up the headship here in September 2022 having worked here from 2014–2018, completed my first teaching placement here in 2010 as well as growing up in Woodhall Farm and attending school locally at JFK, all this means that I feel a strong connection to the school and our wider community.

This evening is an opportunity for you to meet your children's teachers and hear about some of the key logistics for the year.

Before that though, I'm going to talk through some whole-school level information, followed by the school's most recent ks2 outcomes and then highlight what else children gain from their time at St Cuthbert Mayne.

Trust



Each of the teachers in this school, sat here in this room, have found there way into Catholic Education because they value community, they value human life and its potential and they care deeply about each and every child that comes through this school. They want to thrive themselves of course, and when they thrive, they have the best chance of supporting your children to thrive too.

School Values

Self-regulation



Empathy



Resilience

Responsibility

So how do we help your children thrive?

We believe that the most important skills that your children can learn to set them up for future success are these: The ability to regulate themselves, to develop empathy, to develop resilience and to take responsibility for their actions. My call to action to all parents is this: support us - when you work with us to develop these skills in your children, you are investing in their future. It is not, we believe, our job – nor yours as parents – to make your children happy although this is likely to be a natural by-product of developing these skills. It is to ensure that they can become independent of us and of you - and the skills we have outlined here will we believe support us and you with this aim.

Communication

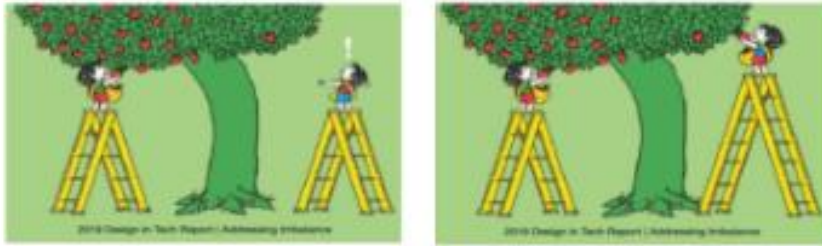


Our School, Pupil and Parent Relationship Agreement and Communication Guidelines are two important documents that aim to support us with this goal. Please read them and support us through following them.

We also try to keep our communications with you as clear and simple as possible through a single Wednesday Email, a half termly newsletter, and our school website. Separate emails are occasionally sent but we try to keep these to a minimum. If you are unhappy or think we can do something better – let us know, but let us know from a place of caring about our community and us as individuals working with your children: constructively and kindly.

A polite notice – please avoid using social media to express dissatisfaction with school decisions or business. If you have a concern, follow the communication guidelines in line with the school, pupil and parent relationship agreement. Please do self moderate these forums and if parents do use this in a way that make you feel uncomfortable, please politely remind them of the purpose and expectations of these groups' use.

Equality vs Equity



Inclusion

'Growing together in love and learning as followers of Jesus.'

The core elements of our work in school – trust, communication and inclusion – are reflected in our school mission statement. A community is a place where people should feel a sense of belonging. Jesus showed repeatedly that God wants to include everyone in His community. As followers of Jesus we are called to live this out in our work in school. This means it is our mission to ensure everyone succeeds and flourishes. An Outstanding Catholic Education for All as our ASCAT mission states. We use a therapeutic approach to behaviour. Natural, educational or protective consequences are put in place as support to change behaviours overtime so when children are ready we can complete restorative work to repair relationships. Every member of our community deserves to feel like they belong.





Our policies around behaviour are designed to maintain a safe and respectful environment for all. However, we frame these policies within a therapeutic approach, ensuring that addressing unwanted behaviours is constructive and supportive. This helps children learn from their experiences and develop positively. We encourage you to support us by helping your children understand the importance of these principles in supporting the whole school community.

Outcomes 2023-24

Subject	SCM	SCM (High)	National	RWM combined
Reading	85.2%	41%	74%	72% (SCM)
Mathematics	82%	34.4%	72%	61% (National)
English Writing	78.7%	18%	71%	16.4% (SCM High)
GPS	90.2%	44.3%	72%	8% (National High)

I've spent some time outlining our vision and values. Ultimately, if we get all of the aspect I have just mentioned right, I believe that outcomes will look after themselves. However, on the screen is our most recent KS2 results.

There are many different ways to measure success. KS2 Sats results are a narrow but useful indicator of how well a group of children have progressed through the curriculum in core areas throughout their time at a school. This information compares last year's children's performance at the end of Key Stage 2 with the attainment of other Year 6 pupils across England. As you can see last year's cohort achieved well when compared to pupils nationally. Our ambition is for 90% of pupils to reach the expected standard with 85% RWM combined.

P	R	A	Y
Protect our Planet	Resilience	Aspirations	Yes! To equality
			

Outcomes are more than just test results though. Our curriculum for foundation subjects provide a clear journey through the National Curriculum expectations and are enriched through planned events, trips and activities throughout the year. Shown on the screen are our curriculum drivers that continue to underpin all our curriculum learning. Our suit of curriculum information can be found on our website.

Extra-curricular



Your children gain so much more...

We also have a rich extra curricula offer in school as you will have seen from the slide show as you came in. The Catholic Life of the school remains active with our Welcome Mass planned for 24th September and liturgies planned throughout the year, which we are excited to invite parents to this year. Our Dominican Heritage is also very important to us.


Our pupil groups: POPStars, Chaplaincy Team, Sport Ambassadors continue to allow pupils to be heard and to represent their peers. This year we have a wide range of clubs on offer including lunchtime clubs such as sing and sign, TRUGS, LEGO and a number of sports clubs. Sporting competitions are planned throughout the year as well as at least one activity, visit or visitor each term for every class. Watford Education Trust are again running after school sports clubs every day after school, along with a range of other activities, including art, dance, and drama.

All classes are receiving curriculum music this year, recorder lessons for year 3 continue and self funded music lessons taking place throughout the autumn term. Forest School continues to be run Mrs Wheeler with support from Mrs Reynolds.

Accreditations



Our work over the previous two years has led to the successful awarding of the School Games Award and a Good Travel Plan Award. This demonstrates our commitment to the development sports in school as well as working to improve safer transport to and from school.



St Cuthbert Mayne PTA.

Last year we raised £2000 for the school through lots of fun events and we able to support the school and children with:

- School trips
- Science dome experience for the whole school
- Forest School equipment
- Investment in new chairs for all classes

Looking for people who can support in following ways:

- Part of the committee
- Support at events
- Support prior to events for planning
- Share PTA news on class what's app

Please reach out through the Facebook as new members are very welcome and know that we always keep things simple, so it won't take up too much of your time.

PTA 2024/25

August	September	October
		Disco 18th Oct
November	December	January
	Movie night	Happy Bags
February	March	April
	Mothers day	Spring Disco
May	June	July
Rainbow day	Father's Day Sports Day	

Finally, how else can you help? Please do support our PTA this year. They are an incredibly important source of community cohesion and additional financial support for the school.



St Cuthbert Mayne
Catholic Junior School

Thank you!

Thank you for your time and I look forward to working with you all throughout the year.